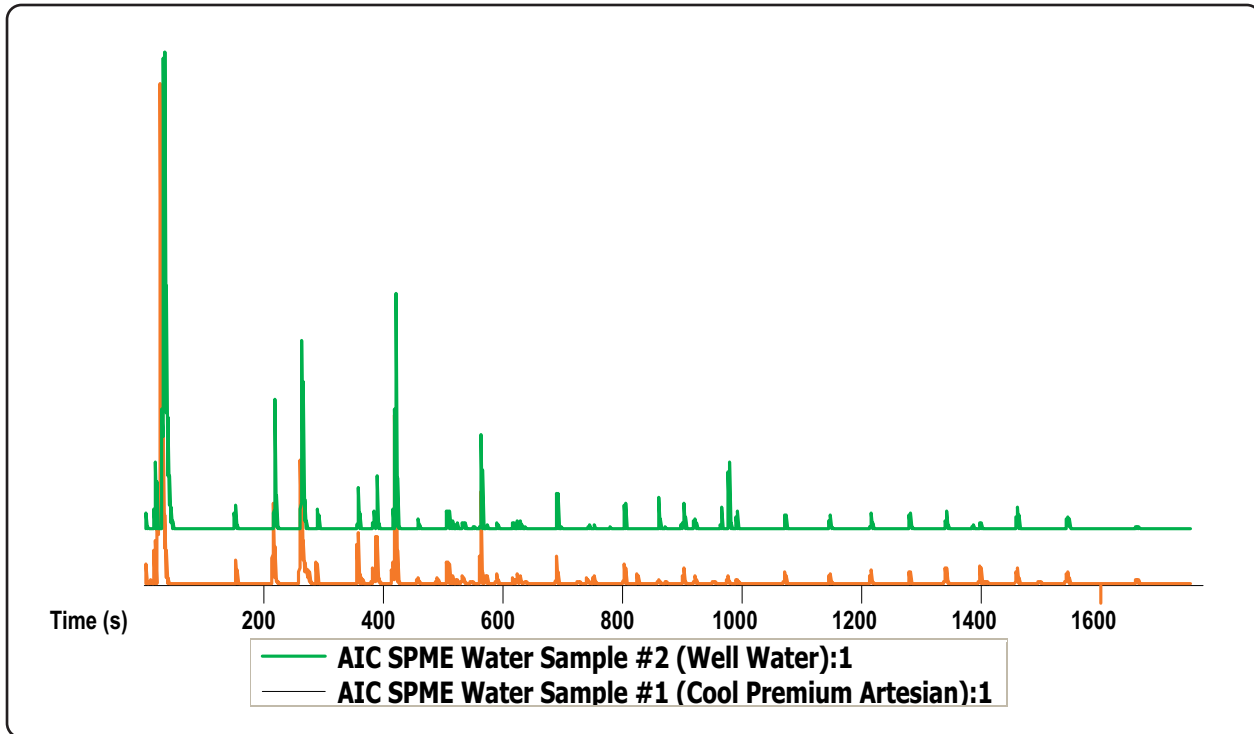


# Comparison of Commercially Available Bottled Water and Potable Well Water by SPME-GC-TOFMS

Life Science and Chemical Analysis Centre  
LECO Corporation, Saint Joseph, Michigan USA



*The comparison feature of the ChromaTOF software was utilized to effectively determine differences between the two water samples. This was done in a fraction of the time it would take to manually evaluate such data.*

**Column:**

10 m x 0.18 mm x 0.18  $\mu$ m Rxi-5ms

**TOFMS:**

40 to 500 m/z @ 10 spectra/s

For questions on this analysis e-mail us at:  
[life\\_science@leco.com](mailto:life_science@leco.com)

For a complete listing of snapshots and application notes visit us on the web at [www.leco.com](http://www.leco.com)

